



LIVE UNITED

2013-2014 ANNUAL REPORT



United Way
of the Coastal Empire

CONTENTS

A Message to the Community	3
GIVE	4
ADVOCATE	6
Education & Youth Development	7
Economic Independence	8
Health & Wellness	9
Basic Human Needs	10
VOLUNTEER	11
Volunteer Leadership	12
Leadership Giving	14
Alexis de Tocqueville Society	14
Beacon Society	15
Young Leaders Society	21
United Way Staff	22
Financial	23

The greatest care was taken to assure the accuracy of this Annual Report based on the information provided. Should an error or omission have occurred, United Way of the Coastal Empire extends our apologies and requests that all corrections be brought to our attention. Please contact Lisa Clark at 912.651.7706 or lisac@uwce.org with any corrections.



A MESSAGE TO THE COMMUNITY

Telling the United Way story, one life at a time

Dear friends,

People ask us all the time, what exactly does United Way do? Often times we tell the story with numbers, such as the number of donors, number of people served and the number of volunteers. The good news is these numbers are large and continue to grow. As a result, our community is better served by United Way.

But oddly enough, what seems to resonate most is the power of one: how one life was changed for the better because of United Way. This year, through the generosity of Georgia Power, we produced a video telling the story of four individuals, unrelated, except for the fact that their lives were changed in a positive way thanks to United Way.

Stan, a retiree, told us about his experience mentoring Cameron, a high school student who needed a positive role model in his life. Big Brothers Big Sisters of the Coastal Empire matched Stan and Cameron; and ever since, it has been hard to tell who has benefited more from the relationship. What is clear is that both lives have been enriched and forever changed.

The next story was about Albert, a single father of two special needs children, who had fallen on hard times and was looking for a “hand up” not a “hand out.” Albert visited the United Way Service Center in Effingham County and with a little support and direction was soon able to start a professional car detailing service. His business continues to do well and has expanded to include residential pressure washing for homes, driveways and fences. An entrepreneurial spirit, determination and United Way helped Albert make a new life for him and his family.

The third story introduced us to little Ceci, who was born deaf and originally misdiagnosed. But thanks to the Savannah Speech and Hearing Center, Ceci received a cochlear implant and her life has changed dramatically for the better. She is progressing well academically and socially and is now in the 3rd grade at the Maritime Academy on Tybee Island where she received straight As on her last report card.

Our last story featured Eartha and her four children. Eartha called United Way 2-1-1 Information and Referral Service after receiving notice that she was about to become homeless. She tells of how United Way gave her hope; and through our referrals, she was able to find quality, low-cost housing for her family. We are proud to share that now Eartha gives hope to others through her work as an Information and Referral Specialist with United Way 2-1-1.

Never underestimate the power of one: one individual reaching out for the help they need, one individual volunteering their time to make the community a better place or one individual giving to support the services that change lives. United Way is simply the power of one, multiplied by many. We welcome you to celebrate the power of one and thank you for making it all possible.

Sincerely,

Jeff Kole
Board Chair
Kole Management Company

Gregg Schroeder
President & CEO
United Way of the Coastal Empire



Jeff Kole



Gregg Schroeder

GIVE

Under the leadership of Campaign Chair Dale Holloway of Georgia Power Company, United Way of the Coastal Empire raised \$8.9 million to support much needed programs and services in our community.

GIVING BY THE NUMBERS

- 2013 United Way Campaign raised \$8.9 million
- Employee giving contributed 59% of the total
- Corporate giving contributed 30% of the total
- Individual giving contributed 11% of the total
- Leadership givers, individuals who give \$1,200 or more, contributed \$2,383,705 to the total
- Combined Federal Campaign (CFC), the only federally authorized fundraising solicitation of military and federal civilian employees, raised \$477,637
- Bryan County Campaign raised \$91,000
- Effingham County Campaign raised \$335,000
- Liberty County Campaign raised \$156,000
- Over 30,000 donors gave to United Way



TOP 30 CORPORATE & EMPLOYEE GIVING

- | | |
|--------------------------------------------------|-----------------------------------------|
| 1. Gulfstream Aerospace Corporation | 16. Effingham County Board of Education |
| 2. Combined Federal Campaign (CFC) | 17. Target |
| 3. Publix Super Markets | 18. Mitsubishi Power Systems Americas |
| 4. Georgia Ports Authority | 19. Kroger Super Markets |
| 5. Colonial Group | 20. Chatham Steel Corporation |
| 6. City of Savannah | 21. United Parcel Service (UPS) |
| 7. Georgia Power Company | 22. Arizona Chemical |
| 8. Georgia Pacific Savannah River Mill | 23. Bradley Plywood Corporation |
| 9. International Paper & Retirees | 24. Critz, Inc. |
| 10. Savannah-Chatham County Public School System | 25. Enterprise Rent-A-Car |
| 11. JCB | 26. Savannah Morning News |
| 12. St. Joseph's/Candler Health System | 27. Seacrest Partners |
| 13. Chatham County Government & Retirees | 28. Memorial Health |
| 14. SunTrust Bank | 29. Kole Management Company |
| 15. Wells Fargo | 30. Dulany Industries |



UNITED WAY WOMEN'S LEGACY COUNCIL

United Way Women's Legacy Council is committed to making a change by encouraging and empowering women to invest in the community. Under the leadership of Connie Farmer Ray, President & CEO of Coldwell Bankers Platinum Partners, United Way Women's Legacy Council held a sold-out event "Women Who Rule Savannah" at the Westin Savannah Harbor. As a result of ticket sales, corporate donations and individual gifts, more than \$31,000 was raised to help fund programs to assist low-income women and children with basic transportation needs.



UNITED WAY ALEXIS DE TOCQUEVILLE SOCIETY

United Way Alexis de Tocqueville Society was formed to deepen individual understanding of, commitment to and support for United Way's work. The society recognizes philanthropic leaders and volunteer champions who devote time, talent and funds to improve lives in our community. Nearly 100 members are part of the society, each contributing a minimum of \$10,000 to United Way.

This year, we lost one of our most beloved members. Jack Neises passed earlier in 2014. During his lifetime, Jack made many generous contributions to help improve lives of families and individuals in our community. He was truly a civic-minded and upstanding model citizen who cared deeply for the well being of the place we call home.

ADVOCATE

United Way advocates for our community's education, income, health and basic needs. We advocate on behalf of dozens of nonprofit organizations across the Coastal Empire that are working tirelessly to provide quality services with limited resources to thousands of people in crisis and in need of opportunity.

We advocate by investing donor contributions wisely and measuring the impact of those investments. We advocate for action; whether through volunteer service, pledging a financial commitment or simply participating in the conversation for change.

Talk to your friends and family about the issues facing our community that are important to you. Let your passion for these issues be heard; write a letter to the editor, comment on a blog, or tell us about it at [facebook.com/unitedwaycoastalempire](https://www.facebook.com/unitedwaycoastalempire).

Connect someone in crisis to resources and services through United Way 2-1-1. Let United Way speak to your civic or social club about the ways in which we're addressing community needs. Volunteer to help United Way invest donor contributions.

Join us. Become an advocate.

The Community Fund

In 2014, United Way will advocate through the investment of more than \$4.5 million in 104 programs and services that are improving lives across Bryan, Chatham, Effingham and Liberty counties. Our extensive investment process involved 63 volunteers from these counties who, collectively, contributed nearly 2,000 hours of time attending site visits, reading funding proposals, audits and IRS filings and meeting with service providers; a contribution valued at nearly \$45,000.

EDUCATION & YOUTH DEVELOPMENT

Helping children and youth achieve their potential

For 2014, United Way is investing \$1,444,931 in 36 programs that prepare children to start school ready to learn, help students achieve academic success and successfully transition to adulthood.

School Readiness

The early years of a child's life are critical for laying the foundation for their social-emotional intelligence and strong academic skills. Extensive studies prove that children's early development and school readiness is a precursor to their educational outcomes and, in the long term, success in life. To that end, we fund high quality early learning programs for children from birth to age five and supports for their parents and caregivers that ensure children start school ready to learn.

Academic Achievement

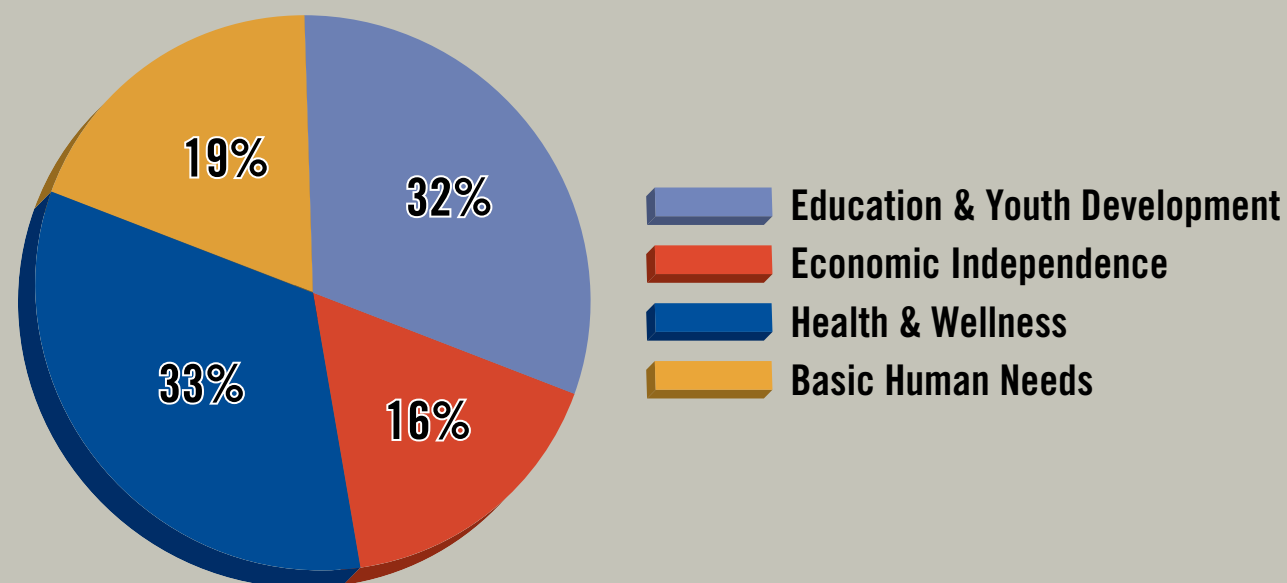
Education does not stop outside of school. Overwhelming research shows that the hours after school, on weekends and during the summer are crucial to the educational success of children. For families living in poverty, the lack of learning based activities sets their children most at risk of educational failure. United Way invests in expanding enrichment opportunities for them when school is not in session. These programs measure improvements in their school attendance, literacy and math skills and grade promotion, with the ultimate goal of high school graduation.

Youth Development

Youth are most at risk in the hours after school, as well as other out-of-school times. Left unsupervised can negatively affect not only their performance in school, but their social and life skills development as they are more prone to be exposed to risky behaviors that lead to juvenile delinquency. To help youth successfully transition to adulthood, we support programs that engage them in positive youth development activities during the nonschool hours. These activities offer youth the supports and opportunities to successfully transition to adulthood and become healthy, confident, contributing members of the community.



2014 Community Investments by Impact Area



2013 Results

- 1,200 low income children, ages birth to five, were enrolled in affordable, high quality early learning education centers; 89% of them are on track to enter kindergarten ready to learn, by successfully developing age appropriate social, emotional, language, cognitive and physical skills
- 1,300 at risk of academic failure children attended out of school time education programs; 95% gained skills and knowledge that helped improve their academic performance
- 13,000 youth had access to safe and structured environment during non-school hours

For a list of 2014 Education & Youth Development programs, visit www.uwce.org

ECONOMIC INDEPENDENCE

Advancing financially stable individuals and families



For 2014, United Way is investing \$733,475 in 24 programs that assist individuals along the path towards financial self-sufficiency.

Employment Stability

Individuals living in poverty - unemployed, low wage workers and even some working multiple jobs - are unable to provide for their families. They need to acquire necessary skills and knowledge to obtain and maintain stable employment which is fundamental to achieving financial stability. To that end we invest in services that assist motivated individuals to find the best path to increasing earnings. These programs offer multi-tiered strategies, involving removing barriers to employment, job training and transitional jobs that pay, with the goal of helping individuals achieve long term employment with family supporting wages.

Financial Capability

For low income families, after the basics, there is often no money left to save. Just one unanticipated expense can lead to crisis. To prevent this from happening, United Way supports financial education and counseling programs that are effective in helping individuals responsibly manage their limited financial resources, and asset building services to help them deal with unexpected expenses and accumulate wealth to support their longer-term goals.

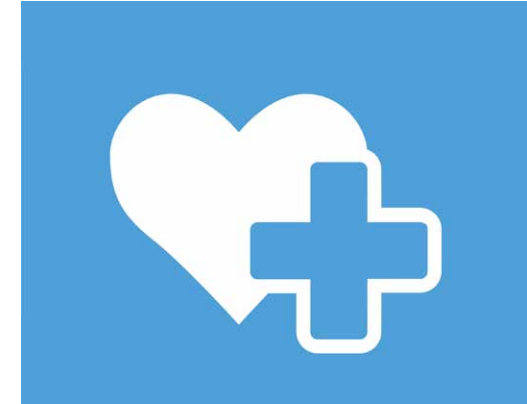
2013 Results

- 3,500 individuals were enrolled in job readiness programs that taught them basic employment acquisition skills such as soft skills, interviewing techniques, resume building, job searching skills, basic computer skills and others
- 1,800 individuals obtained and maintained employment
- 5,600 individuals were connected to public benefits such as Earned Income Tax Credit and Supplemental Nutrition Assistance Program
- 2,200 individuals received counseling on budgeting, money management and credit issues; 97% reduced debt and improved their credit

For a list of 2014 Economic Independence programs, visit www.uwce.org.

HEALTH & WELLNESS

Improving health for all



For 2014, United Way will invest \$1,494,170 in 35 programs and services that are improving the health and well-being of low-income, under- or uninsured adults, child and adult survivors of abuse and frail seniors and persons with disabilities.

Disease management & prevention

Low-income, under- or uninsured adults living with or at-risk of developing a chronic disease or health condition improve health literacy, disease management and preventive behavior.

Empowering victims to be survivors

Survivors of domestic violence and sexual assault access the supports they need to recover from abuse and ensure their safety.

Keeping children safe from abuse & neglect

Children who have experienced or are at-risk for abuse or neglect are kept safe and relieved of trauma.

Living independence for seniors & persons with disabilities

Seniors and persons living with disabilities improve quality of life through health and personal independence at home, work and in the community.

2013 Results

- \$8 million in free medication distributed
- Nearly 5,000 low-income, under- and uninsured children and adults received medical, dental and mental health care
- 14,625 nights of safe shelter provided to victims of domestic violence and their dependent children
- 157 children provided food, clothing, safe shelter, medical care and counseling services
- More than 2,500 low-income seniors received hot meals and groceries
- 142 frail seniors and persons with disabilities received home repairs and modifications to increase independence

For a list of 2014 Health & Wellness programs, visit www.uwce.org.

BASIC HUMAN NEEDS

Providing fundamentals in time of crisis

In 2014, United Way will invest \$877,000 in nine programs and services to provide food, clothing, shelter, preparedness and relief in times of crisis.

Food, clothing & shelter

Each year, our emergency shelters and feeding programs see thousands of homeless adults come through their doors. With help, many are able to stabilize and move towards self-sufficiency. But some are not and so the need to provide temporary food, clothing and shelter remains a United Way priority.

Disaster services

Preparing for and responding to disaster is a necessity for our coastal community. Whether a large-scale weather-related event, such as a flood or tornado, or the more common apartment and home fires, our local chapter of American Red Cross is always on the scene. Through the maintenance of a highly-trained corps of more than 700 (and counting) Disaster Action Team volunteers who are at the ready 24/7/365, and targeted outreach and education for disaster preparedness and planning to those who are most vulnerable in times of disaster, American Red Cross continues to be United Way's frontline partner for disaster services.

2013 Results

- Nearly 6 million lbs. of food distributed through area food pantries and feeding programs
- More than 160,000 meals served to homeless and low-income individuals & families
- 53,130 bed nights provided to homeless individuals and families
- More than 700 trained volunteers aided more than 1,000 victims of disaster
- Over \$300,000 in direct assistance to disaster victims to prevent homelessness

For a list of 2014 Basic Human Needs programs, visit www.uwce.org. A complete list of 2014 funded programs is available at www.uwce.org/ourwork. United Way of the Coastal Empire provides an array of resources, supports and services to the funded programs at no charge or membership fee.



VOLUNTEER

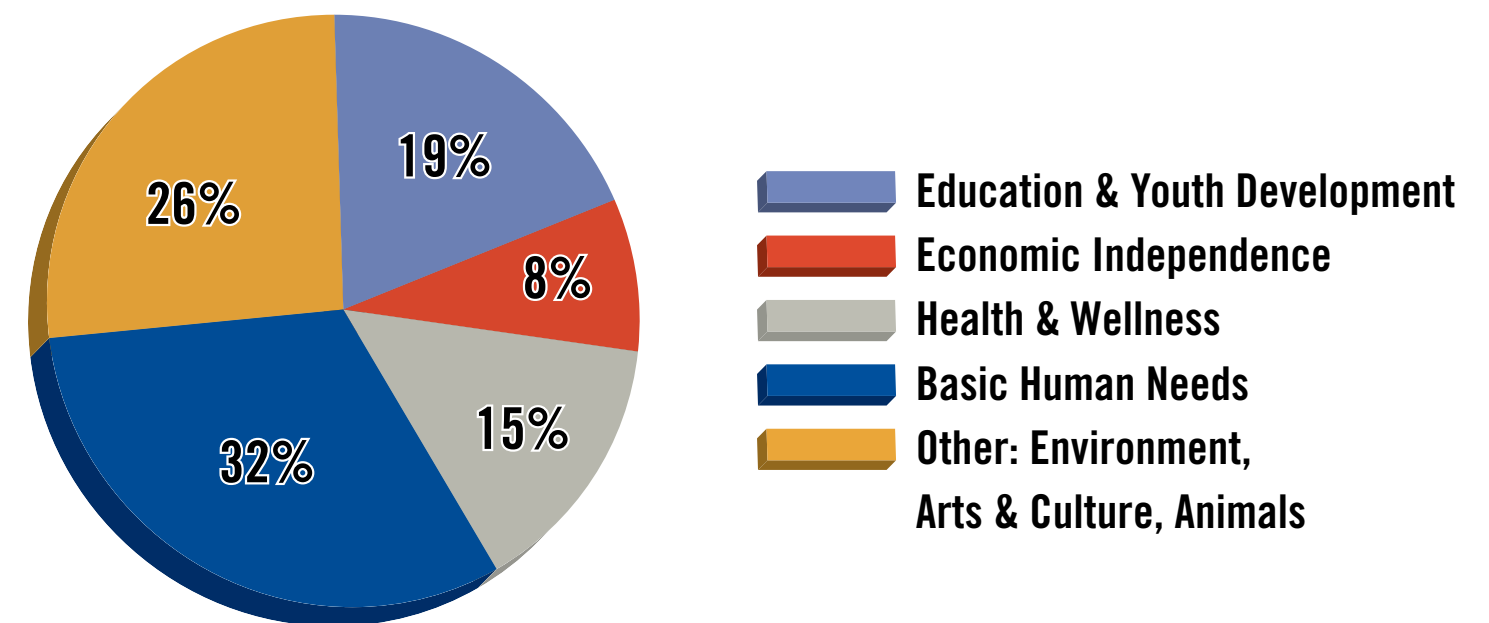
United Way HandsOn Savannah

In 2013, United Way HandsOn Savannah continued to turn passion into progress by connecting individuals, civic groups and companies to high-impact, relevant and engaging volunteer opportunities.

Through our network of passionate volunteers and volunteer administrators, we mobilized 9,500 individuals who contributed over 58,000 hours of service valued at \$1,284,120 according to the Independent Sector's hourly volunteer rate of \$22.14. We also provided 540 hours of volunteer administration training and consultation to strengthen professionalism in the field.



Volunteer Engagement by Issue Area



Community Initiatives That Are Making A Difference

Last year, United Way of the Coastal Empire awarded Savannah Technical College's Accelerating Opportunities program with a grant for \$290,000. The goal of this grant is to build career pathways that provide career advancement opportunities for lower-skilled workers and job seekers to obtain family-supporting wages.

Accelerating Opportunities program recruits for four career pathways: Welding, Industrial Systems, Aircraft Structural and short-term Health Sciences. These pathways not only represent high demand job opportunities and pay family-supporting wages, but they all also offer opportunities for career advancement. The program currently has 68 students. Enrollment is open to the public with priority given to those referred from a United Way funded program that meets the eligibility criteria.



UNITED WAY 2-1-1

United Way 2-1-1 continues to be a cornerstone of resources and help for our community.

Through 2-1-1, United Way of the Coastal Empire connects community members to resources supporting education, income, health and basic human needs. United Way 2-1-1 makes it easier for people to get help from hundreds of non-profit, faith based and government health, human and community service organizations, as well as gain access to volunteer opportunities.



In 2013, United Way 2-1-1:

- Answered over 15,000 calls in our six-county area: Bryan, Chatham, Effingham, Glynn, Liberty and McIntosh counties
- Scheduled 1,500 emergency assistance appointments for Chatham County Department of Family and Children Services (DFCS)
- Distributed over 13,000 baby diapers throughout United Way's four county area; diapers were donated by Weyerhaeuser
- Distributed 500 school uniforms to Savannah Chatham County Public Elementary Schools; uniforms were donated by Belk
- Distributed 300 personal care packages to area veteran and homeless populations

VOLUNTEER LEADERSHIP

Board of Directors

CHAIR OF THE BOARD

Jeff Kole
Kole Management Company

VICE-CHAIR OF THE BOARD

Michael C. Traynor
Savannah Morning News

PAST BOARD CHAIR

Cathy P. Hill
Georgia Power Company

CORPORATE SECRETARY

Steve Pound
St. Joseph's/Candler Health System

TREASURER & FINANCE CHAIR

Pratt Summers
Colonial Group

CAMPAIGN CHAIR

Dale Holloway
Georgia Power Company

COMMUNITY INVESTMENTS CHAIR

Dr. Michael Toma
Armstrong Atlantic State University

MARKETING CHAIR

Deb Thompson
WSAV-TV

COMMUNITY SERVICES CHAIR

Dr. Malik Watkins
University of Georgia

AT-LARGE EXECUTIVE COMMITTEE MEMBERS

Connie Farmer Ray, Coldwell Banker
Platinum Partners
Dr. Kathryn Martin, Georgia Health
Sciences University
Cindy Robinett, Seacrest Partners

Mary Ann Bowman Beil, Memorial University Medical Center

Denis Blackburne, The Woda Group, LLC

Lt. Col. Will Bowman, Hunter Army Air Field

Jason Buelterman, City of Tybee

Anthony Burns, Georgia Power Company

Jimmy Burnsed, Bryan County Commissioners; Bryan Bank & Trust

Trey Cook, Savannah Tire

Mark Dana, Prince Bush Smith Hotels

Dr. Cheryl Dozier, Savannah State University

Terry Enoch, Savannah Impact

Jennifer Giffen, Gulfstream Aerospace Corporation

Steve Greenberg, Weiner, Shearouse, Weitz, Greenberg & Shawe, LLP

Craig Harney, WTOC-TV

District Attorney Meg Heap, Chatham County Government

Frank Huff, Community Volunteer

Archie Jenkins, Community Volunteer

Lowell Kronowitz, Levy Jewelers

Pete Liakakis, Community Volunteer

Steve Liotta, Effingham County Government

Dr. Thomas Lockamy, Savannah-Chatham County Public Schools

Dr. Kathy Love, Savannah Technical College

Frank Macgill, HunterMaclean

Joseph Marinelli, Visit Savannah

Samuel G. McCachern, Thomas & Hutton

Katherine McCartney, The Coastal Bank

Toby Moreau, BB&T

Diana Morrison, Advertising Specialty Services

Jeff O'Connor, First Citizens Bank

Cliff Pyron, Georgia Ports Authority

Wendy Sims, Bryan County Family Connection

Commission Chairman Al Scott, Chatham County Government

David Slagel, Weyerhaeuser

Ralph Stegner, International Paper

Tony Thomas, Savannah City Council

Trip Tollison, Savannah Economic Development Authority

Terry Tuggle, Mitsubishi Power Systems

Jason Usry, WJCL-ABC/WTGS-FOX

Steve Vernon, JCB

Bryan County Advisory Board

Eric Anderson, Pembroke Advanced Communications

Byron Atkinson, Boost By Design

Dan Brothers, Community Volunteer

Mary Beth Brothers, Bryan County Board of Education

Lisa Bunkley, Iron Data

Judy Cook, City of Pembroke (Retired)

Lawanda Edenfield, Hobart

Amber Fordham, Savannah Technical College,

Liberty University

Bryan Fordham, Hargray

Brenda Garrett, Richmond Hill Senior Center

Kay Green, South Bryan County Recreation Department

Totsie Hughes, Community Volunteer

Jolene Lea, Coastal Endodontics; 165th Air Guard –

Medical Group

Betty Lee, Bryan County Health Department –

Environmental Health

Terri Liles, Helen's Haven

Kim McGhee, Pembroke City Council

Jeff Morton, Fidelity Bank

Lisa Moss, Santello's Italian Restaurant

Jackie Mullins, SunTrust Bank (Retired)

Jamie Parker, Savannah Morning News

Pam Pendrak, City of Richmond Hill

Wendy Sims, Bryan County Family Connection

Shana Statham, Bryan County News

Caitlin Young, Richmond Hill City Center

Effingham County Advisory Board

Frank Huff, Advisory Board Chair, Corp of Engineers (Retiree)

Michael Griffith, Advisory Board Vice Chair,

Georgia Pacific – Savannah River Mill

Taryn Knick, Advisory Board Vice Chair, BB&T

Andy Lamon, Secretary, Gateway Community Church

Melanie Fulcher, Effingham County Board of Education

Julie Hales, Effingham Magazine

David Harris, US eBusiness Solutions

Dr. Jack Heneisen, New Concepts Health Services

LaMeisha Hunter-Kelly, City of Rincon

Archie Jenkins, Community Volunteer

John Kieffer, Kieffer Properties

Dinah King, Georgia Power Company

Vicky Little, Effingham Health Systems

Linda McDaniel, Effingham Tax Commissioner

Lisa Saxon, Gulfstream Aerospace Company

Chief Phillip Scholl, City of Rincon

Tess Smith, Comcast

Mark Smith, Wal-Mart

Robert Solomon, Savannah Technical College

Alexis Williams, Board of Education

Liberty County Advisory Board

Anthony Burns, Advisory Board Chair, Georgia Power Company

Richard Hayes, Advisory Board Vice Chair, United Ministerial

Alliance

Cheryl Burriss, Campaign Chair, Davidson Estates

Lily Baker, Liberty County Board of Education

Richelle Barrett, The Coastal Bank

David Clark, CenturyLink

Pamela Ferry, Liberty County Board of Education

David Floyd, Family Connections

Kathryn Fox, Coastal Courier

Layton Gilroy, Community Volunteer

Kawana Hayes, Hinesville Board of Realtors

Isabel Hernandez, The Coastal Bank

Libby Hodge, Connections Church

Irene McCall, Community Volunteer

Katherine McCartney, The Coastal Bank

Dr. David Peer, Liberty County Chiropractic Clinic

Clementine Washington, City of Midway

Chris Wilkins, The Heritage Bank

LEADERSHIP GIVING

Alexis de Tocqueville Society

United Way's Alexis de Tocqueville Society includes individuals who contribute an annual gift of \$10,000 or more. With strong leadership from Reed Dulany III, the Tocqueville Society contributed \$1,249,331 to the annual campaign. United Way expresses our sincere appreciation to the following Alexis de Tocqueville members who clearly show a commitment to the spirit of philanthropy that our community leaders hold.

LA SOCIETE NATIONALE * \$100,000 and above

Anonymous
Mr. & Mrs. Robert S. Jepson, Jr.

ORDRE DE FRATERNITE * \$75,000 - \$99,999

Mr. & Mrs. Robert H. Demere, Jr.

ORDRE D'LIBERTE * \$25,000 - \$49,999

Mr. & Mrs. William J. Barton, Jr.
Joe & Mary Dobransky
Mr. & Mrs. Reed Dulany III
Mr. & Mrs. Richard Eckburg
Frances & John Kane
Alice & Tom Tisch
J. C. Lewis Foundation

ORDRE DE CLASSIQUE * \$15,000 - \$24,999

Anonymous
Mr. & Mrs. Willaim A. Baker, Jr.
Mr. & Mrs. Daniel H. Bradley
Mr. & Mrs. W. Waldo Bradley
Mr. & Mrs. Francis A. Brown
Gale & Gene Cartledge
Mr. & Mrs. Dale Critz, Sr.
Debbie & Dale Critz, Jr.
Thomas A. & Dorothy B. Davis
Kaye & Don Kole
Donald L. & Sandra R. Mayer
The Solomons Family Foundation

MEMBRES DE LA SOCIETE * \$10,000 - \$14,999

Anonymous (2)
Mr. & Mrs. Alan Anderson
Mr. & Mrs. Curtis G. Anderson
Mrs. Sylvan M. Byck, Jr.
Mrs. Edward F. Downing
Mr. & Mrs. H. Mitchell Dunn, Jr.
Steven & Carter Eagle
Anthony S. & Donna L. Eichholz
Bob & Jean Faircloth
Kay & Bob Ford
Dr. & Mrs. John P. George
Cathy P. Hill
Mr. & Mrs. William E. Johnston
LeeAnn & Jeff Kole
Hilary & Lowell Kronowitz
Aaron & Dayle Levy
Joseph & Nelly Lombardo
Carolyn M. Luck & Don McElveen
Dr. Kathryn Martin
Rev. & Mrs. George Maxwell
Jerry & Vicki McElreath
Henry Monsees
Mr. & Mrs. Richard D. Moore
Mr. & Mrs. Howard J. Morrison, Jr.
Samir Nikocecic & Charles Taylor
David & Jeanne Paddison
Roger & Rachel Page
Gregory Parker
George & Ellen Powers
Stephen & Jacqueline Rabinowitz
Thomas V. & Susan G. Reilly
Lori & Rob Roberts
Mr. & Mrs. John T. South III
Liz & Bill Sprague, Jr.
Mr. John W. Stephens, Jr.
Austin & Marti Sullivan
The Tenenbaum Family
Paula & Glenn Wallace
Cindy & Don Waters
Mr. & Mrs. Tracy Young

Beacon Society

Membership in the Beacon Society starts at the \$1,200 level. United Way thanks the following individuals for investing in the future of our communities:

FLEET ADMIRAL'S CIRCLE * \$7,500 - \$9,999

Ira P. Berman & Helen A. Borrello
Bill & Posy Merz

ADMIRAL'S CIRCLE * \$5,000 - \$7,499

Anonymous
Katherine Blair
Marianne & Chuck Canter
Dorothy & Jim Dewberry
Murray & Sharon Galin
James & Juliana Goughary
William H. Keaton
Bob & Marie Kraft
Steven M. & Laura J. McNear
John & Allison Morgan
Richard B. Reuss
Barbara & Michael Ruddy
Edward C. & Diane Schmults
Gregg & Mary Schroeder
Mr. & Mrs. Bert Tenenbaum
Richard L. Williams

COMMODORE'S CIRCLE * \$2,500 - \$4,999

Anonymous
David & Elaine Barrow
Mr. & Mrs. James B. Blackburn
Mr. & Mrs. Roger P. Bowman
Harold C. Brown
Esther & Aaron Buchsbaum
Drs. Joe & Marilyn Buck
Agnes Marie Smith Carter
Selena Catherine Coleman*
Thomas S. Cullen
Sally D. Davis
Barry W. & Joy M. Deal

Lisa & Bernard Doyle
Robert Eastland
Brian & Beverly Fingerle
Curtis & Donna Foltz
Sumi Fonseka
Al Garvin
Eboni Gordon*
Dr. Robert W. Grant
Kathleen Henry
Jean & Willard Holland
Dale & Sheree Holloway
Steven Horbachefsky
Kathy Horne & Carl Pedigo
Nancy H. Johnson
Ken & Lisa Jones
Brian M. Kelly
David & Sonya Kersey
Ann & Charles Koepke
Margie & B.H. Levy, Jr.
Dr. & Mrs. James G. Lindley, Jr.
Steve & Michelle Liotta
Dr. Kathy S. Love
Griffith Lynch
Dr. & Mrs. Jeffrey S. Mandel
Karlos J. Manning*
Sam McCachern
Donald Max Mills
Mrs. Sidney Nutting
Rick & Lori Panettieri
Karen & Cliff Pyron
Mike & Debbie Rouzee
David Royall
Rich L. Sauter
Mr. Thomas R. Selig & Mrs. Marian P. Selig
William Seymour III
Drs. Steven & Patricia Shapiro
Joseph C. & Frances Smith
Dr. & Mrs. Sidney P Smith
Mark Sonenshein
Mrs. Maria T. Sparkman

Stephen Stephens
Jim & Janet Stevenson
Dennis J. Stuligross
George & Barbara Summerell
Mr. & Mrs. T. Pratt Summers
Trip & Tracey Tollison*
Christopher Toupin
Patty & Bill Ulmer
Randal C. Weitman
Ed & Janice Wesemann
Robin Wingate
Peter J. Yates
David & Pamela Young

CAPTAIN'S CIRCLE * \$1,500 - \$2,499

Anonymous (7)
Cecil & Lou Abarr
Francis M. Ahearn
Hosam Eldein Ali
John & Cort Atkinson
Kimberly Argenta
Barry & Barbara Baker
James R. Baker
Mr. & Mrs. Craig Barrow III
Gus H. Bell III
Bill & Leslie Bennison
Danielle Binion
Brian Birge*
Drs. Randolph & Priscilla Bishop
Kevin S. Blair
Gary & Sandy Bocard
Robin & Tom Borkowski
Michael R. Bostic
Scott Braswell
Charles & Gloria Bray
Mr. & Mrs. Joseph P. Brennan
Monty E. Brown
John & Zhenya Buckridge*
Scott Buethe

LeRoy Burke III
Mark Burns
Jimmy & Becky Burnsed
David & Becky Burr
Mr. & Mrs. J. Ryan Chandler IV*
Cynthia Louise Chapel
Tracey L. Choquette
Mr. & Mrs. Charles B. Compton, Jr.
Suzanne Cooler
Judge Claire Cornwell-Williams &
Mr. Alan S. Williams
Richard & Barbara Cox
Mary Jane Crouch
Bret & Tom Curless
Stephanie Cutter
Julie & Ken Cyr
Sherry H. Danello
Mr. James E. Daughtry
Steven L. Davis
Sally Dayton & Tim Moore
Lisa & Eddie Dean
James E. Dempsey
Charlie & Beverly Dillard
Andrea B. Dove*
David Dubose III
Carol & John Duren
Dr. & Mrs. Benjamin Duval
Earl Etheridge, Jr.
Richard & Cynthia Evans
Dr. & Mrs. William S. Ray, Jr.
Mr. & Mrs. George Fawcett
Betsy Flaherty
Mr. & Mrs. Jeff P. Franklin, Sr.
Todd & Penny Freesemann
Martin Fretty
Jeff Fulton
Maggie & Matt Gignilliat
Molly & Arthur Gignilliat
Robert G. Goodwin
Wylie B. Griffin III
Mr. & Mrs. Joe Hargrove
Paul & Amy Harkness
Shayne M. Harris
Brian E. Harrison
Melvin L. Haysman & Roberta Kamine-
Haysman

Mr. & Mrs. John C. Helmken II
Ben & Monique Herron
Debra R. & Edward M. Hughes
Mike Husain & Jane Schonian
Arthur Jenks
Steve Johannsen
Chris Johnson
David Johnson
Joan & Kenneth L. Johnson
Ben & Shea Jones
Melanie Jordan & Oliver Bradbury
Martin L. Karp
Nancy Keck
Mr. & Mrs. Jeff Keller
James & Tee Kelley
Paul & Joy Kerkhoff
Craig & Judy Kessler
Dinah L. King
Jan & Dr. Gerald Kramer
Jeffrey A. & Dr. Christine Kreide
Ronald Kronowitz
Jim & Karen Laplander
Denny Latham, Jr.
Mr. & Mrs. John G. Lientz
Ray R. Maddox
Stephen Marbut
Doug & Brenda Marchand
John & Allison Marrero
Lise Marshall
Leta & John Martin
Dr. Rebecca L. Martin*
Cam Mathis & John Brannen
Mr. & Mrs. Robert May
Mike & Kathleen McCarthy
Mr. & Mrs. J. Cliff McCurry
Jamie & Kendall McCurry*
David L. McGee
John W. McKinstry
Julie & Jerry McLean
Robert & Nancy McNair
Kathy & Jim McNaughton
Michael Mena
Marion Levy Mendel
Mr. & Mrs. James B. Mercer
Nick & Stella Merolli
Peter Mierke

Derek & Vicki Miles
Ricky Miller*
Brian R. Mitchell
Charles D. Monroe
Toby & Karye Moreau
Kevin R. Morin
Tommy & Deborah Morris
Mr. & Mrs. G. Ronald Morris
Dr. Steven L. Morris
Bob Moulton
Jessica R. Murphy
Mark & Daphne Murphy
Soumya Neravetla*
Jeffrey C. Neville
Susan Nooney
Roger & Judy Nord
Greg O'Beirne
Thomas O'Connor
Karen H. Oelschig
Mr. & Mrs. Paul W. Painter, Jr.
Karen & Jim Pannell
Maj. Gen. & Mrs. Wilton B. Persons, Jr.
Paul & Lindsey Pesca
Milton L. Petersen
Denise Regan & John Picker
Frank M. Powell, Jr.
H. Robert Powell
Daniel T. Powers
Ryan E. Price
William Richardson
Steven M. Ritchie
Marquis T. Roberts*
Mary Beth Robinson
Dan & Carrie Rohde
Jerry & Mary Rooney
Joan L. Ross
Mr. & Mrs. Randall C. Roulrier
Mike & Amy Rowland
Katherine & Louis Saez
Brad Samuelson
Chris Saucedo
Peggy & Ralph Schilly
Cathy & Larry Schmitz
Carl Schomburg
Charles & Nell Seaton
Swann Seiler

Joseph Setina
Mr. & Mrs. Curt Shambaugh
Cathy Sheesley
Dr. Beth Sheridan & Mr. Thomas
Gustinella
Charles & Kathy Shoemaker
Tammy Sides
Bob & Marilyn Slagel
David & Katherine Slagel
Kavin & Mary Smith
Robert Smith
Scott & Richelle Southwick
Dr. Clifford Spiro & Linda Artley
Mr. & Mrs. John W. Spivey
Alex Strling
Brooks & Carolyn Stillwell
Sheldon & Zelda Tenenbaum
Douglas & Lisbeth Thom
Alderman Tony Thomas
Rick & Deb Thompson
John & Liz Thompson
Thomas & Sanda Thomson
Julie & Terry Tolbert
Michael & Lisa Traynor
Mr. & Mrs. William H. Trice
Lisa Tripp
Christiana & Bart Turner
Chris E. Vick
Drew & Julie Wade*
Louise & Tom Wagner
Jeffrey D. Wallace
Mr. & Mrs. Robert Weber
Sue Wettengel
Col. Edward I. Wexler, USAF Ret
Floyd & Jenifer Whittington
Richard & Linda Wigger
Melissa Wilder
Eric & Linda Winger

COMMANDER'S CIRCLE * \$1,200 - \$1,499

Anonymous (17)
Jennifer Abshire
Steve & Montie Acuff
David S. Acuff*
Charles & Rozanne Aimone
Dr. Vicki L. Albritton
Melissa H. Allen
Dr. & Mrs. Kevin Ammar
Bill & Deidra Anderson
Amber & George Aragon*
Dr. & Mrs. Murray Arkin
Liz & Steven Arkin
Louis & Ann Atterberry
William Austin
Dr. & Mrs. Anthony Avino
Danny & Kim Bachman
Mohsen Badran
Todd M. Baiad & Anne Allen Westbrook*
Frank & Elena Banks
Marlon & Diane Barefield
Mr. & Mrs. Ben S. Barnes
Mr. & Mrs. Ronnie A. Barnhill, Jr.
Joe & Karen Barr
William G. Barton
Nicholaus J. Batey*
Teri & Bob Beard
Benjamin N. Beason*
Dr. & Mrs. C. Walker Beeson
Joseph & Carolyn Bell
Janis Z. Bevill
Steven David Black
Drs. Adam & Sarah Boldt*
Dr. & Mrs. Franklyn P. Bousquet III
Sean Brandon
Robert F. Brannen
Lawrence M. Bristow
Dr. Annette K. Brock
Mr. & Mrs. Kevin M. Broderick
Dr. & Mrs. Thomas R. Broderick
Suzanne Brodersen
Derek K. Brown
Janice C. Brown
LaVanda R. Brown

Linwood Brown
Michael B. Brown
Dr. & Mrs. Robert F. Brown
William T. Brown, Jr.
Willie E. Brown
William Thomas Browne, Jr.
W. Thomas Browne III*
Tressa A. Brush
Brian Bryant
Dr. & Mrs. Vernon T. Bryant
Jody M. Buelterman
Marlene Buhler
Ben & Mary Buie
Art & Kati Burdett
Dan Burer
Mrs. Stephen R. Burke
Dr. Debbie C. Burnette
Anthony Burns
Jeb Bush & David Nathe*
Michael Butler
Mrs. Vonciel R. Butler
Mrs. Ellen Byck
Robert G. Byers
Mayra Calzadilla-Vieito
Birgit & Luis Carreras
Dr. Frances Carter & Mr. Paul Purcell
Susan & Jeff Catron
Dr. & Mrs. Todd Cellini*
David & Joan Chalikian
Dietrich D. Chapple
Mary Chatman
Clay Cheshire*
Alison T. Clay
Lisa G. Colbert
G. Scott & Laura C. Coleman
Jimmy Collins
Michael & Miki Collins*
Randy & Helen Collins
Jim & Rose Mary Cone
Angela P. Conlee
David & Darlene Conley
Mr. & Mrs. Raymond B. Corbett*
Quinton Council*
Lessie Cowart*
William D. Craig
Linda Cramer

Dr. & Mrs. Henry Croci
 Susan S. Daggett
 Fred & Karen Daniel
 Linda & William T. Daniel, Jr.
 Edward N. Davis III*
 Drs. Michael & Iris Dayoub
 Jay Deering
 John & Edith Dekle
 Ashley Dellinger*
 Houstoun Demere*
 D. Morgan Derst
 Roger D. Deschenes
 Jeremy D. Detwiler*
 Kathryn E. DeYulia
 Dr. & Mrs. Keith Dimond
 Christy & Ward Divine
 Quint Dixon
 Peter & Jean Doliber
 Brian E. Dorcheus
 Jeffrey M. Dove
 Kaye C. Dowell
 Terri G. Doyle
 Mr. & Mrs. J. Lawrence Dunn
 Dr. Mark Dusek
 LaTecha Q. Eady
 Richard M. Eichholz
 Charles Elliott
 Iris Ellsberry-Smith
 Ann M. Elmore
 Marla & Stanley R. Epperson
 E. Robert & Carolyn Ernest
 Gary L. Evans
 Linda J. Evans
 Stuart P. Exley
 Dr. Ronald Fagin
 J. Daniel Falligant
 David & Marianne Fields
 John H. Fitzgibbon III
 Jerry & Clarissa Flemming
 Mitchell H. Ford
 Yancy Ford*
 Brian & Lynn Foster
 Jennifer Willis Fox
 William P. Franklin, Jr.
 William & Deborah Friend
 Rob & Kathy Fritz

Jane S. Furchgott
 Luke Gardiner
 Dr. & Mrs. David Gaskin
 William C. Gaskin
 Harold R. Gaston
 Dr. & Mrs. Morris Geffen
 Drs. Adelle Burnsed-Geffen & Theodore Geffen
 Jenny L. Gentry
 T. Mark & Diane Gentry
 Carolyn K. Gilbert
 Sean & Maggie Gill
 Jada Godbee
 Drs. Danae & Ron Goldberg
 Brian Gore
 Brynn Grant
 Samuel L. Grant, Jr.
 David N. Grayson*
 Dr. Richard Greco & Mrs. Robin Greco
 Sally & Steve Greenberg
 Judy Griffin
 Karen A. Hadden
 Donna H. Hall
 Jeff & Janet Halliburton
 Ronald Hamilton
 Susan & William Hancock
 Fran & Graham Harold
 Dr. Donald A. Harper
 Tom & Debbie Harris
 Dr. Gary N. & Alice Harvey
 Rose M. Haynes
 Pauline V. Haywood
 Meg Heap
 Mr. & Mrs. Jeffrey A. Heeder
 Nolan D. Hennessee
 Thomas Hester & Monica Mastrianni
 Peggy Hickox, in loving memory of my husband, Michael E. Hickox
 Nancy Highsmith
 Fran & Paul Hinchey
 Mary Anna Hite
 Mr. & Mrs. Raymond Hites
 Wendy Hoersting
 Russell & Mary Hoffmann*
 Maureen T. Hoke
 Jim & Judy Holland

Patricia H. Holland
 Julia & Lea Holliday
 Marcus Hooks
 Rob & Robin Horan
 Dr. John C. Howard
 Donald C. Howe
 Donna Howell
 Mr. James Finn & Dr. Susan B. Howell
 Mr. & Mrs. G. M. Hubbard
 Bill & Lynda Hubbard
 Edd & Cara Hudson
 Tiffany D. Hughes*
 Mr. & Mrs. Craig W. Hull, Jr.
 Sandra Humphrey
 Drs. Michael & Jacqueline Huntly
 Kim Iler
 Charles & Janice Izlar
 Edna B. Jackson
 Arleda L. James
 Linda H. James
 Glenn & Wilma S. Jeffers
 Mr. & Mrs. Richard C. E. Jennings
 Michelle Jervey
 Richard A. Johnson
 Marty Johnston
 Mr. & Mrs. Jack Jones
 Kelly M. Kahley
 Michael & Vanessa Kaigler
 Fran Kaminsky
 Daniel T. Keefer*
 Katherine & James Keena
 Dell & Janet Keith
 Tonya C. Kelly
 Adam Kennedy
 Allan Kennedy
 Al & Terri Kennickell
 Stephen Kilburn
 Robert A. King
 Michael Konter
 Susan M. Koopmann
 Matthew Kossler
 Martin Krozell
 Mr. Nanopadol Seniwong & Dr. Yulianty Kusuma
 Jim & Cathy LaHaise
 Gregory Lamb

Lem & Kathy Lancaster
 Cindy & Craig Landolt
 Osmos W. Lanier
 Dr. & Mrs. Todd & Amy Lanier
 Bob & Diane Lapsley
 Dr. Beth Larrimore
 Kurt & Barb Lauer
 Dr. & Mrs. Harvey C. Lebos
 Terry & Sarah Lemmons
 Edward Levine, Jr.
 Scott & Jodi Lewis
 Pete Liakakis
 Ivanna M. Livingstone
 Dr. Thomas B. Lockamy, Jr.
 Dr. & Mrs. J. Robert Logan
 Alan S. Lowe
 Dr. & Mrs. Barry Luskey
 Patti & Patrick Lyons
 Frank S. Macgill
 Joseph Mack
 Dr. Phil & Carole Malan
 Debra & Paul Mamalakis
 Quentin L. Marlin*
 Karen Marx
 Frank & Barbara Mason
 Kirby Mason
 Timothy R. Mathews
 John E. Matthews
 Kyle McCann
 John & Lois McCarthy
 Ray & Rebecca McClain
 Ann & Rex McClure
 Jean B. McCormick
 Veleeta McDonald
 Alvin McGrath, Jr.
 Mr. & Mrs. Herbert A. McKenzie
 Jason E. & Renee S. McMillan*
 Charlie & Carmen McQueen*
 Tom McTier
 Capt. Samuel J. Meyer
 Bob & Carole Michna
 Sgt. Clint & Major Kim Middleton
 Hon. Charles B. Mikell & Dr. Julia L. Mikell
 Nick Milionis
 Cynthia L. Miller

Dr. Harry J. Miller
 Julian & Judy Miller
 Dr. Larry Miller
 Paul & Tammy Mims
 Jimmie & Amy Mincey
 Al & Wendy Ming
 Scott J. Mollison
 Mr. & Mrs. T. C. Mooney
 Eleanor Valeri Moore
 Nancy Moorer
 Norma Jean & Ashley Morgan
 Dr. & Mrs. Joseph V. Morrison, Jr.
 Dr. & Mrs. Morgan W. Murray
 Rosalind S. Nathaniel
 Dr. & Mrs. Corley H. Nease
 John J. Neely III
 Dr. & Mrs. Donald Nelson*
 Saloman & Nicole Nolasco*
 Rev. John M. Novikoff
 Mr. & Mrs. Walton K. Nussbaum
 Dr. Mark Nyce
 Wayne R. Oedewaldt
 Jenny & Tim O'Sako*
 Richard Osborne
 William Osborne
 Kevin L. Owens
 Jonathan B. & Kimberly W. Pannell*
 Mr. & Mrs. Louis F. Parent, Jr.
 Mary B. Parks
 Cynthia A. Patterson
 John & Jennifer Patterson
 Barbara & John Paull
 Tally J. Peek*
 Imogene Peebles
 Heather Peloquin
 Cheryl L. & Daniel J. Pennings
 A. M. Peterson
 Bill & Jane Peterson
 Mark & Jackie Pickering
 Raymond & Constance Pittman
 Mary M. Pizzino
 Dr. & Mrs. Michael D. Poole
 Dr. Myra M. Pope
 Steve & Donna Pound
 Sean & Shelley Proctor*
 Jane E. Protz

Dwane E. Ragan
 Ann & Tom Ramee
 Carl & Barbara Ramey
 Drs. Giselle Rosinia and Stephen Rashleigh
 Melissa Carter Ray
 Courtney Reich*
 Tammie M. Reinhart
 Mr. & Mrs. Kenneth E. Rentiers, Sr.*
 Jeff Retey
 Beverly & Allan Reynolds, Jr.
 Mr. & Mrs. Edwin G. Reynolds
 Kris Rice & Jeff Baker
 Debbie Rich
 Jim & Linda Rich
 Rob & Robyn Roberts*
 Mr. & Mrs. Timothy D. Roberts
 Roddie & Cindy Robinett
 Anne Robinson*
 David L. Robinson*
 Joseph R. Ross
 Dr. Julie Ann Routhier*
 Thomas J. Rubrecht*
 Barrie H. Ruland
 Barry D. Russell, Jr.
 Camille Russo
 Mr. Stephen & Dr. Linda Sacks
 Robb K. Sallee
 Patrick L. Salter
 Guy L. Sammons
 Buddy Sams
 David C. Sapp
 W. Tom Sawyer, Jr. & Bonnie P. Sawyer
 Bob & Cathy Scanlon
 Mr. & Mrs. Peter Schavoir
 Diane & John Schleicher
 Dr. & Mrs. Richard Schulze, Jr.
 Albert J. Scott
 Anthony R. Scott
 Charles & Wendy Seiler
 Shirley Sessions
 Celeste & Joe Shearouse
 William G. Shira
 Mr. & Mrs. Richard W. Shomaker
 Peter & Linda Shonka
 Kirk E. Simmons

Richard T. Simmons
 Morris Cullen Simpson
 Andrew P. Slater
 Carolyn A. Smalls
 Dr. & Mrs. Ronald C. Smiley
 Cynthia Smith
 Darryl C. Smith
 Elaine J. Smith
 Margaret Joan Smith
 Ned & Marcia Smith
 Robert F. & Barbara E. Smith
 Daniel P. Snope
 Sarah Denmark & Adam Solender
 David A. Sowards
 Stan & Kimber Sparks
 Mrs. S. James Spitz, Jr.
 Mary Ellen & Larry Sprague
 David & Susan Stagnitto
 Katie Stanley
 Nicholas D. & Heather J. Stanley
 Richard & Clara Steinbach
 Harry W. Steinhauser, Jr.
 Tim & Patty Steinhauser in memory of
 Willa Steinhauser
 Bobby T. Strickland
 Elizabeth T. Stout
 Chris & Teresa Stovall
 Steve Stramm
 Natalie Hendrix Stickland
 David & Elizabeth Sullivan

Dr. & Mrs. Roland Steven Summers
 Hiliard R. Sumpter
 Sam Suttle
 William C. Sutton III
 Mr. & Mrs. Jim Tait
 David & Kimberly Tanner*
 Frank & Terry Tarleton
 Mr. & Mrs. John M. Tatum
 Guy Taylor
 Michael & Kathleen Taylor*
 Steven J. Taylor*
 Don & Marian Teuton
 Russell E. Thompson
 Tina Thompson
 Linda Tippins
 Mark & Mitzi Toth
 Mark Troughton
 Terry J. Tuggle
 John K. & Diana Usher
 Dr. & Mrs. Robert A. Vaught
 Steve Vernon*
 Cissie & Irving Victor
 Robert Vieito
 Lynette B. Ward & Family
 Janice R. Watkins
 Drs. David & Diane Weems
 N. Harvey Weitz
 Matthew E. Wesley*
 Capt. & Mrs. Richard D. Wesley
 Susan & Jeff White

Jay & Shae Wilcox
 Mark & Emmy Wilcox*
 Joseph Wilderman
 Dr. & Mrs. Leslie L. Wilkes
 Rodney & Margaret Williams
 Richard D. Williams
 Elizabeth Wesley Wilson
 Tony & Jenny Wilson
 Ms. Van Wilson
 Dewey A. Winkler
 Scott Winslow
 Dr. & Mrs. F. P. Wirth
 Mr. Scott Dinho & Dr. Allison Witherow*
 Marshall S. Withers
 Rob & Melinda Wolz
 Mrs. Frank L. Wooten, Jr.
 Capt. & Mrs. Christopher L. Yarbrough
 Christopher L. Yarbrough, Jr.*
 Dr. & Mrs. James A. Yeckley
 Angela B. Young
 Michael & Dawn Young
 Dan & Celese Zbytovsky
 Robert & Linda Zerbe
 Alex L. Zipperer
 Michael & Linda Zoller

(*Denotes Young Leaders Society)

Young Leaders Society

Young Leaders Society is a collection of young professionals in the Coastal Empire that are inspired to make a philanthropic commitment to their community. Members emerge from our community by giving their time, talent and donations to United Way. The mission of Young Leaders Society is to engage, inspire, educate and empower the next generation of community leaders through philanthropy and volunteerism. Members benefit from volunteer service opportunities, social experiences, additional learning opportunities through the board internship program and professional development by networking with other members.

Hammond Bailey
 Jason Bateham
 Breton F. Bell
 Sabrina A. Berry
 Micah R. Birge
 Mary A. Blalock
 Nicole Brantley
 Gloria D. Bray
 Ryan Bray
 Bradley T. Brookshire
 Felicia M. Brown
 Terry T. Brown
 Jessica A. Burns
 Matthew Cail
 Drew A. Caldwell
 Amanda A. Clayburne
 Megan L. Collins
 Scott M. Collins
 Londe Cremeans
 Bobby Crow
 Christopher A. Daigle
 Kristi Davis
 Christian B. Demere
 Ryan J. Dew
 Brandon Dowling
 Lakesha D. Erwin
 Adam F. Fayer
 Kate Freeman
 Kason P. Fritts
 Vincent L. Gardner, Jr.
 John & Sheila Giordano
 Ashley S. Golden
 Jovon M. Green
 William C. Gruver
 David J. Hall III
 Alen J. Harris

Calvin Harris
 Deidre R. Harrison
 Thomas C. Hartridge
 Tamara L. Hegi
 Sarah A. Herd
 Dustin J. Hetzel
 Frances B. Hodder
 Tawana S. Hooks
 Kristy Horbachefsky
 Kendrick M. Hunter
 Karonda C. Ivery
 Heather T. Jackson
 William P. Jacobs
 Mark F. Johnson II
 Shamir Johnson
 Elyse Kilgour
 Jonathan W. Kitchens
 Brian Kliebert
 Douglas M. Kyle
 Matthew N. Lai
 Heath Lloyd
 Reginald T. Magwood
 Tavares Malone
 Garrison Marr
 Ronald W. Massey
 Syleste E. Maynard
 Ashante Mays
 Marcus M. McBride
 Denise S. McCoy
 Mary McDougal
 Latasha R. McLemore
 Chuck & Rikki McMillan
 Eric Mercer
 Percell Bernard Moffett
 Michael P. Mosely
 Royce C. Neff

Evelyn Neitzel
 Donde M. Paige
 Steven G. Parish
 Allison Dowdy Parsons
 Ryan Patrick
 Alexandra L. Pedrick
 Rebecca Pierson
 Enarlem D. Prather
 Blake A. Proudfoot
 Natalia L. Quintero
 Jeremy R. Richards
 Dolores S. Rivera
 Dominic R. Ross
 William B. Roux
 Andrew V. Rucinski
 Christina R. Russell
 Cody Scott
 Jasmine N. Scott
 Michael J. Sharp
 Rachael A. Sheahan
 Justin & Katy Sikes
 David M. Slatinsky
 Shermaine L. Smith
 Dustin W. Snipes
 Lawrence J. Strickland
 Joseph J. Taranovich
 Latisha Y. Thomas
 John D. Trent
 Jason E. Usry
 Paulette L. Watts
 Randall M. Webb
 Jennifer M. Wells
 Brett T. Winzeler
 Adrienne D. Wright

UNITED WAY STAFF

David Anderson
Building Engineer

Destiny Bradshaw
Program Manager, Effingham Center for Working Families

Jeb Bush
Special Events Director, Marketing

Lisa Clark
Vice President, Marketing

Glenda Coates
Receptionist

Kristi Cox
Area Director, Bryan County

Selena Coleman
Accounting Associate, Finance

Julie Cyr
Vice President, Resource Development

Jennifer Darsey
Area Director, Liberty County

Margaret Davis
Accounting Associate, Finance

Julie Dickey
Assistant Director, Effingham County

Bonnie Dixon
Area Director, Effingham County

Lynne Gray
Receptionist/Information & Referral Specialist, 2-1-1

Katie Guardino
Interim Director, Combined Federal Campaign

Tonya Henderson
Administrative Assistant, Bryan County

Tara Jennings
Vice President, Community Initiatives

Stacey Johnson
IT Manager/Accounting Associate, Finance

Trudy Jones
Director, 2-1-1

Melanie Jordan
Vice President, Finance & Administration

Kathleen Lancia
Administrative Assistant, Liberty County

Renee Lofton
Assistant to the President

Pfeffer McMaken
Senior Director, Community Investments

Rikki McMillan
Campaign Coordinator, Resource Development

Erica Neet
Division Director, Resource Development

Rebecca Pierson
Program Associate, HandsOn Savannah

Eartha Pinckney
Information & Referral Specialist, 2-1-1

Gregg Schroeder
President & CEO

Shirley Sessions
Director, HandsOn Savannah

Kim Tanner
Associate Director, HandsOn Savannah

Daniela Trajkovska
Director, Community Investments

Ariane Wallace
Information & Referral Database Manager, 2-1-1

FINANCIAL

United Way of the Coastal Empire places great emphasis on upholding the highest standards of excellence and accountability. To ensure efficient, strong fiscal management, United Way's Finance Committee regularly reviews the organization's financial reporting and management practices on behalf of the Board of Directors and reports the results of their activities. In addition, United Way receives an annual independent audit and has consistently received a clean, unqualified audit opinion.

FINANCIAL SUMMARY DECEMBER 31, 2013 (UNAUDITED)

Statement of Financial Position

ASSETS		LIABILITIES AND NET ASSETS	
Cash and cash equivalents	\$1,757,729	Agency allocations payable	\$4,800,006
Herschel V. Jenkins Trust Account	910,605	Agency designations payable	2,377,559
Pledges receivable (net of uncollectible pledges)	6,669,213	Other agencies payables	548,327
Other receivables	208,006	Debts payable	0
Prepaid expenses	36,592	Accounts payable	64,758
United Way endowment	279,846	TOTAL LIABILITIES	\$7,790,650
Building and equipment (net)	1,597,955		
		NET ASSETS	3,669,296
TOTAL ASSETS	\$11,459,946	TOTAL LIABILITIES & NET ASSETS	\$11,459,946

Statement of Activities

SUPPORT AND REVENUE		EXPENDITURES	
Current year contributions	\$8,952,832	Allocations to UW agencies and programs	\$4,684,469
Less uncollectible pledges	(544,000)	Designations & other expenses	2,368,308
NET CAMPAIGN	\$8,408,832	Community service programs	1,264,773
		Admin & fundraising expenses	1,147,256
Herschel V. Jenkins Trust income	664,430	Depreciation	136,473
Other income	327,116		
Grant income	72,500	TOTAL EXPENDITURES	\$9,601,279
Rental income	98,416		
Interest income	9,069	INCREASE(DECREASE) IN NET ASSETS	11,818
Gain on endowment	32,734		
TOTAL OTHER REVENUE	\$1,204,265		
		2013 BEGINNING NET ASSETS	\$3,657,478
TOTAL SUPPORT AND REVENUE	\$9,613,097	2013 ENDING NET ASSETS	\$3,669,296

United Way of the Coastal Empire (UWCE) is contracted to manage the Combined Federal Campaign (CFC) and raised \$477,637 in the 2013 campaign. Of this amount \$5,512 was designated to UWCE, which is reflected in the figures reported above. Campaign expenses for the CFC were \$139,406. UWCE's share of the campaign expenses were \$1,609.

Founded in 1938, United Way of the Coastal Empire has since been devoted to improving lives by mobilizing the caring power of communities. United Way serves Bryan, Chatham, Effingham and Liberty Counties. Thanks to the Herschel V. Jenkins Trust Fund and other income, which covers almost all administrative and fund raising costs, donor contributions go to help people in need.

428 Bull Street, Savannah, GA 31401
912.651.7700 | www.uwce.org



LIVE UNITED